



Version

LEICHTevolution®



CAPABILITY STATEMENT



Karsten Moritz | Florian Weininger
July 2026

SERVICE AREAS





HOLISTIC PRODUCT DEVELOPMENT (HPD)

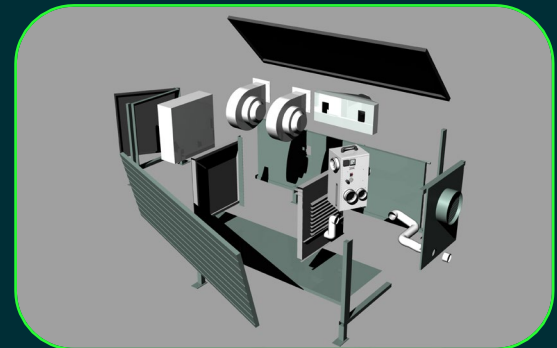
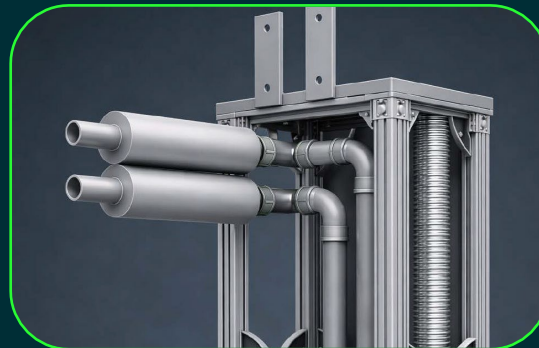
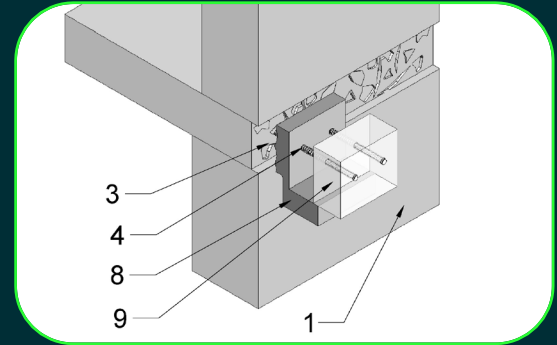
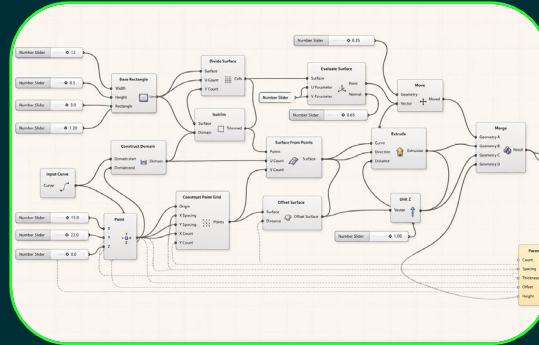
FROM SKETCH TO SERIES

Good ideas often take too long to become market-fit, series-ready and scalable.

Reasons may include changing requirements, missing validation steps, an unfavourable sequence of development activities or shifting objectives.

LEICHTevolution supports you on the journey from early concept to market entry - with structure, technical judgement and extensive experience.

From sketch to series - experience that matters.





HOLISTIC PRODUCT DEVELOPMENT (HPD)

TYPICAL WORK PACKAGES | OUTCOME



* Technical assessment only - no legal advice. A qualified patent attorney should be consulted for legal matters.



HOLISTIC PRODUCT DEVELOPMENT (HPD)

TECHNICAL DEVELOPMENT FIELDS

CONSTRUCTION TECH

- Serial Refurbishment
- Vertical Building Extension
- Modular Systems
- Industrialised Prefabrication
- Accelerated Installation

MATERIALS TECH

- Coating Technologies
- Composite Materials
- Insulation Materials
- Material Compatibility
- Membrane Materials

SUSTAINABILITY TECH

- Energy Efficiency
- Carbon Footprint
- Circular Economy
- Sustainable Product Design
- Life Cycle Assessment



HOLISTIC PRODUCT DEVELOPMENT (HPD)

FROM VISION TO MARKET AND SERIES READINESS



LEICHT
evolution



Project Governance and Control

- Responsibilities, Accountability
- Control of Costs, Budgets, Schedule, Quality, Resources and Production Capacities
- Schedule and Cost Plan, Milestones, Design Freeze, Production Releases

* Technical assessment only - no legal advice. A qualified patent attorney should be consulted for legal matters.



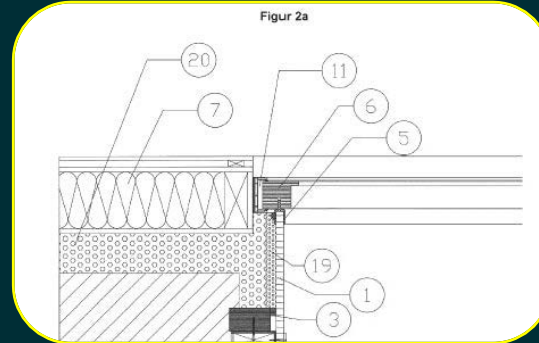
TECHNICAL DUE DILIGENCE ADVISORY (TDD)

50+ YEARS OF INDUSTRIAL EXPERIENCE: WE KNOW WHAT MATTERS



LEICHTevolution assesses not only the technical innovation itself, but the entire development pathway - from the vision and scalable product through to series production and market launch.

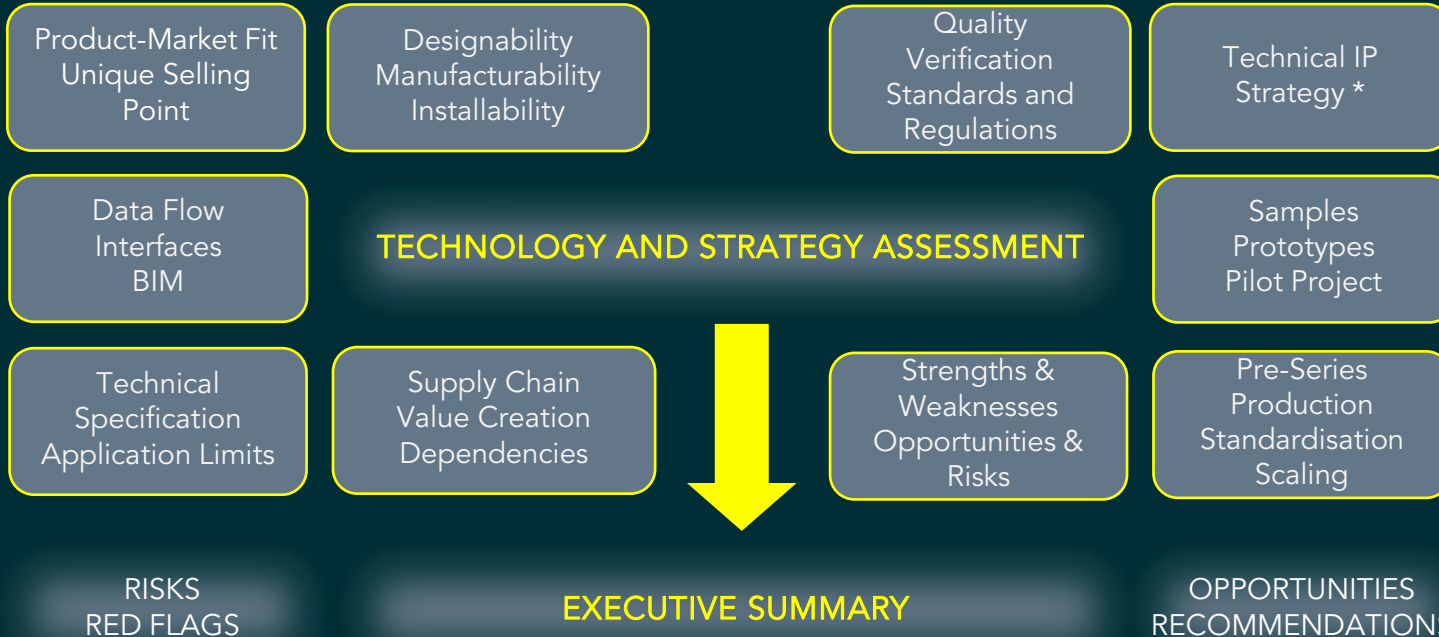
We consider the key success factors for investment decisions, identify opportunities, assess risks and point out critical warning signs where necessary.





TECHNICAL DUE DILIGENCE ADVISORY (TDD)

TYPICAL WORK PACKAGES | OUTCOME



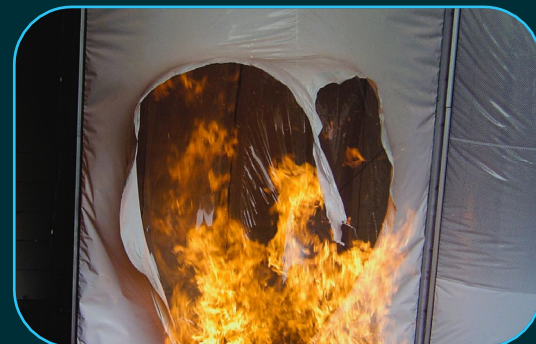
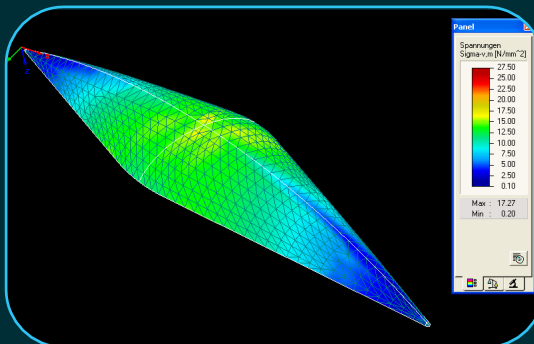
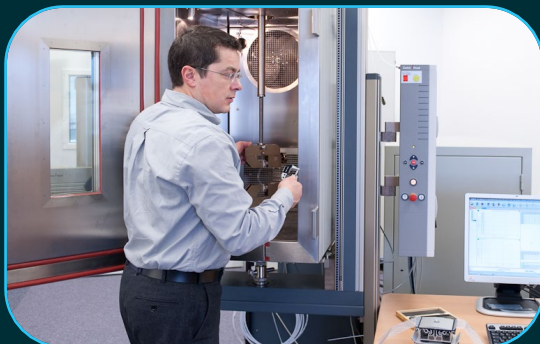
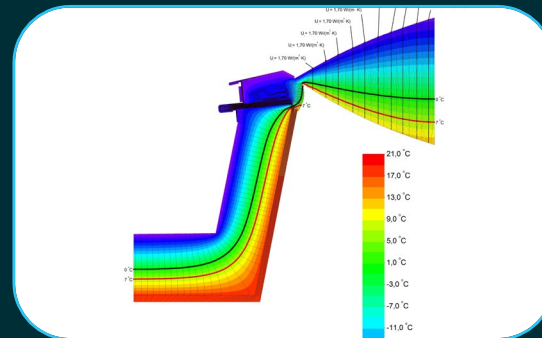
* Technical assessment only - no legal advice. A qualified patent attorney should be consulted for legal matters.



ENGINEERING SERVICES (ENG)

TECHNICAL EXPERTISE IN THE LAB AND ON SITE

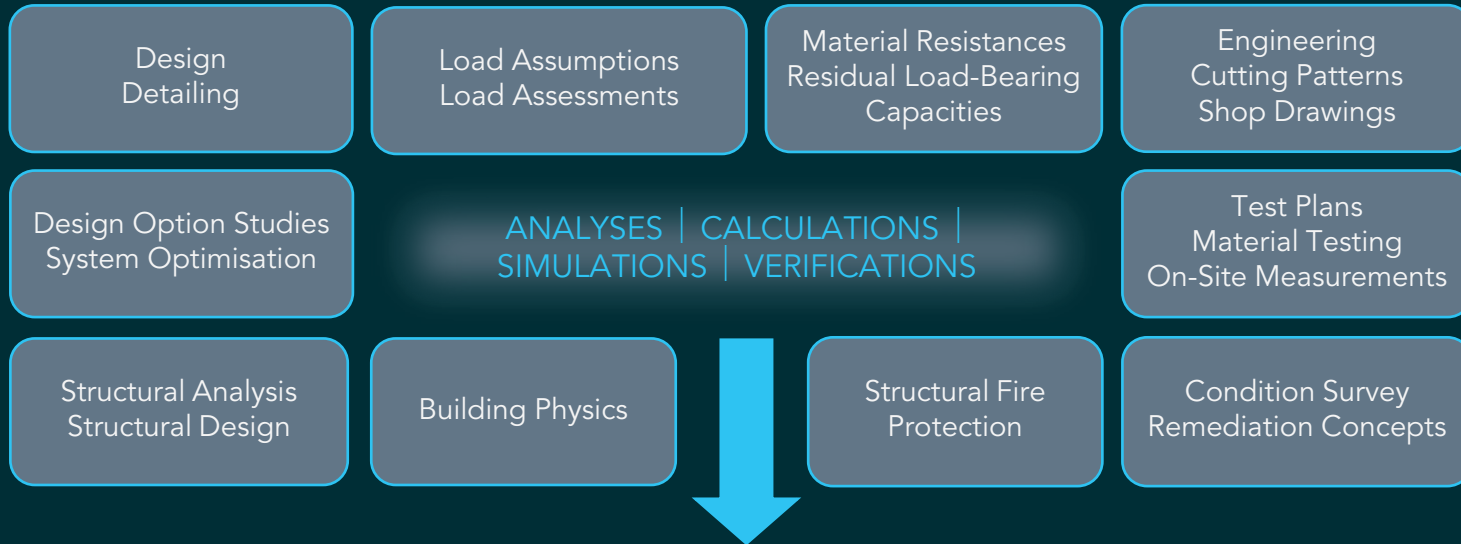
Whether it involves BIM-compliant 3D constructions, verification of structural integrity, structural fire protection or building physics: LEICHTevolution masters the digital tools as well as parametric planning, design and verification.





ENGINEERING SERVICES (ENG)

TYPICAL WORK PACKAGES | OUTCOME



TECHNICAL REPORT | DRAWINGS



TECHNICAL ASSESSMENTS | EXPERT REPORTS (TEC)

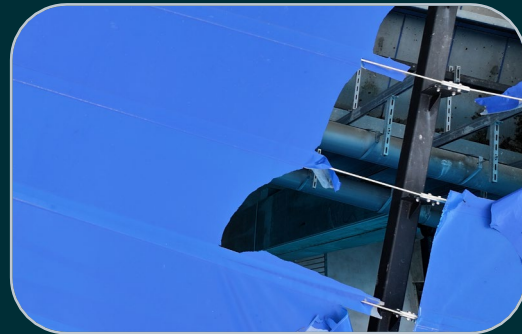
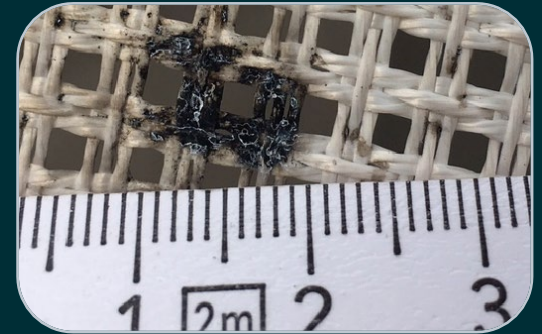
INDEPENDENT – RELIABLE – FACT-BASED



LEICHTevolution does not stop at identifying and assessing visible damage. We determine the causes, influencing factors and suitable routes for remediation.

This requires in-depth technical knowledge of damage mechanisms, investigation methods and remediation techniques.

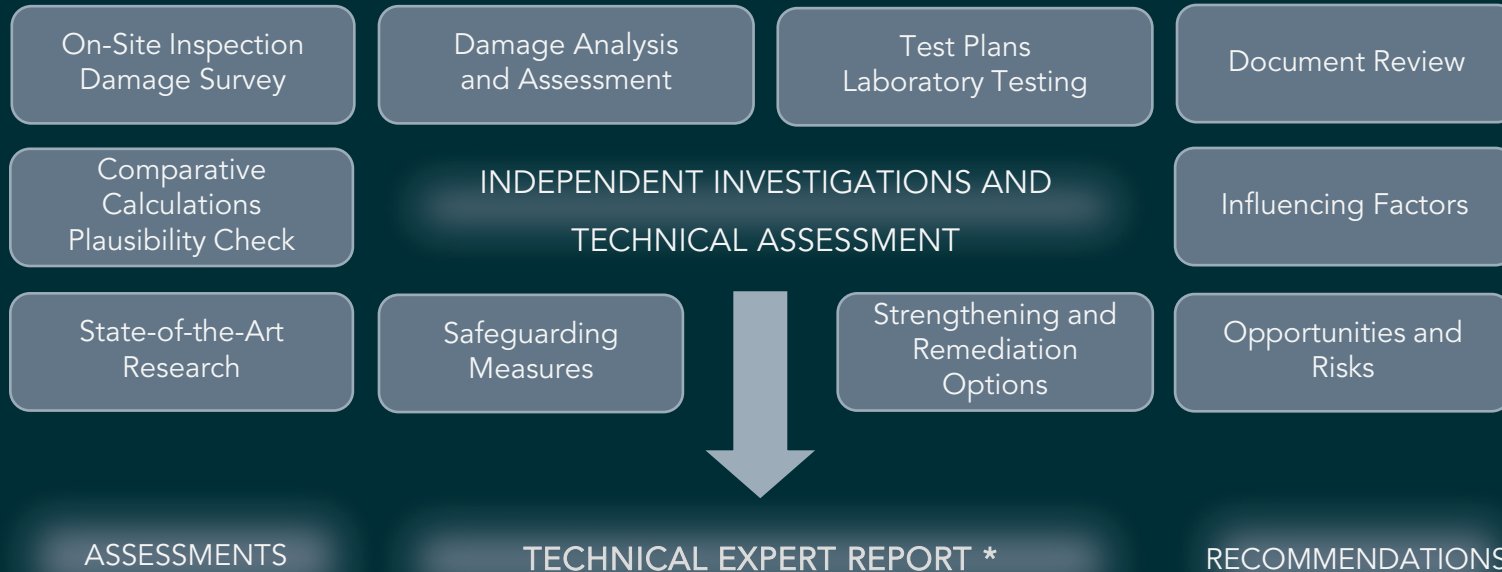
Remediation is only successful if the underlying cause has been established with sufficient certainty.





TECHNICAL ASSESSMENTS | EXPERT REPORTS (TEC)

TYPICAL WORK PACKAGES | OUTCOME



* By an expert recognised by the Chamber of Engineers of Saxony-Anhalt, Germany, for structural engineering, lightweight and membrane structures.



TECHNICAL EXPERT REPORTS (TEC)

SURVEY | ANALYSIS → SOLUTION | CONCEPT

- Technical assessment of construction products | construction processes | building systems
- Technical assessment of materials | ideas | innovations
- Quality assurance concepts | damage prevention
- Identification of causes of damage | damage sequences | influencing factors
- Remediation and strengthening concepts
- Preparation of feasibility studies
- Support | mediation in damage claims
- Assessment of technical documents | third-party concepts (second opinion)

* By an expert recognised by the Chamber of Engineers of Saxony-Anhalt, Germany, for structural engineering, lightweight and membrane structures.

WE ADVISE DECISION-MAKERS



TYPICAL CLIENTS

- System and Material Manufacturers
- General Contractors | Turnkey Contractors
- Architects | Engineers
- Authorities | Public Bodies | Funding Agencies
- Universities | Industry Associations
- Research Institutes | Testing Laboratories
- Housing Companies | Property Managers



EXPERIENCE THAT MATTERS



Karsten Moritz
Managing Director
Prof. Dr.-Ing.



Florian Weininger
Authorised Signatory
Prof. Dipl.-Ing.



50+
80%
20+

Successfully implemented development projects
Standardisation rate in product development | 30% average cost reduction | 85% faster installation
Funded research and development projects | total funding EUR 800k+



50+
30+

Set-up and management of planning and R&D departments (up to 12 employees)
Test programmes | set-up and management of a testing laboratory | 3,000+ material and component tests
Approvals of construction products and systems | sustainability certifications



15+
5+

Innovation management | technical strategies for the protection of intellectual property
Patent developments and filings | 12+ patents granted
Successful company-side technical due diligence rounds



4
50+
50+

Engineering consultancies (founder | co-founder | shareholder | managing director)
Years of combined international management experience in the industry
Technical reports and expert opinions | damage analyses | refurbishment concepts

WHEN RESOURCES ARE NEEDED



<https://www.leichtonline.com/>

SUPPORT FROM THE
LEICHT GROUP



<https://leichtphysics.com/>



Version

WE ARE LEICHT



- L** Leading
- E** Efficient
- I** Independent
- C** Confidential
- H** Holistic
- T** Trusted



LEICHTevolution GmbH

Königstrasse 9 | 83022 Rosenheim | Germany

Mobile: Prof. Dr.-Ing. Karsten Moritz | +49 172 7474 379

office@LEICHTevolution.de | www.LEICHTevolution.de